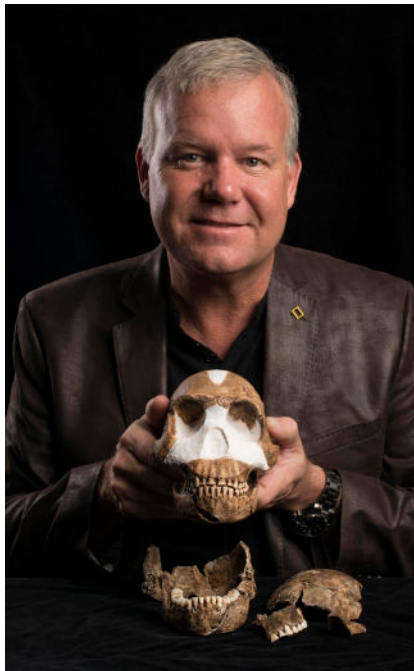


JUST ADDED!

S*T*A*R SERIES

STUDENTS & TEACHERS ARTS RESOURCE SERIES
SUPPORTING B.E.S.T STANDARDS THROUGH THE ARTS



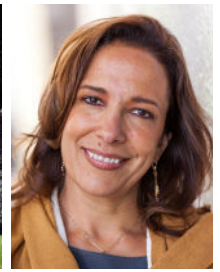
NATIONAL GEOGRAPHIC LIVE

THE BEGINNING OF US: National Geographic Explorer and Paleoanthropologist Lee Berger

Friday, October 20 at 10:30am
RINKER PLAYHOUSE
Performance Length: One hour
Recommended Grade Levels: 3-12
Suggested Curricula: Science

Paleoanthropologist Lee Berger uncovered Australopithecus sediba, an early hominid ancestor who fell into a cavernous deathtrap nearly two million years ago. Now, he's back with another monumental find — a new hominid species that made tools, art and even buried its dead.

Teacher ticket sale August 26



NATIONAL GEOGRAPHIC LIVE

MESOAMERICA ILLUMINATED Microarcheologist Dr. Diana Magaloni-Kerpel

Friday, December 15 at 10:30am • RINKER PLAYHOUSE
Performance Length: One hour
Recommended Grade Levels: 3-12
Suggested Curricula: Science, Social Studies

Art historian and microarcheologist Dr. Diana Magaloni-Kerpel reveals how the iconic Olmec heads of Mexico were created and the true meaning behind the imposing Teotihuacan pyramids.

Teacher ticket sale August 26



HIP-HOP ORCHESTRA EXPERIENCE FEATURING ENSEMBLE MIK NAWOOJ

Friday, January 19 at 10:30am • RINKER PLAYHOUSE • Performance Length: One hour • Recommended Grade Levels: 6-12 • Suggested Curricula: Music

Part concert, dance party and club night, HIP-HOP ORCHESTRA EXPERIENCE features original music that samples from classical and hip-hop. With a lyric soprano, turf dancer, woodwinds, French horn, strings, piano and drums, the music is rigorous, nuanced and accessible. Be here as they push the boundaries of both hip-hop and concert music and create something completely new, including works from Mozart, Bach and Beethoven, deconstructed and reimagined with funky rhythms and rapid-fire rhymes.

Teacher ticket sale December 2

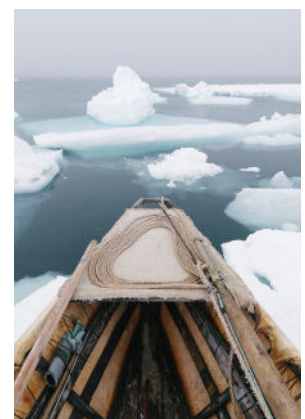
NATIONAL GEOGRAPHIC LIVE

LIFE ON THIN ICE National Geographic Explorer and Photographer Kiliii Yüyan

Thursday, March 28 at 10:30am • RINKER PLAYHOUSE
Performance Length: One hour • Recommended Grade Levels: 3-12
Suggested Curricula: Science, Social Studies.

Through beautiful images and awe-inspiring moments, National Geographic Live takes you on a journey with our first Indigenous speaker Kiliii Yüyan to understand the Arctic's native peoples and their relationship to a frigid land and its animals.

Teacher ticket sale December 2



PEAK Series

PEAK series made possible by a grant from the MLDauray Arts Initiative in honor of Leonard and Sophie Davis

To learn more, visit kravis.org/education