

TECHNICAL SPECIFICATIONS Helen K. Persson Hall



WEST PALM BEACH, FLORIDA
January 5th, 2023

TABLE OF CONTENTS

Seating Chart	4
Dimensions and Specifications	5
Portable Stage	6
Soft Goods Inventory	10
Lighting Inventory	11
Repertory Lighting Plot	12
Sound and Communication	17
Wardrobe & Dressing Rooms	12
Orchestra Equipment Specifications	12
Map of Building.....	13
Map of Surrounding Area	14

Helen K. Persson Hall
at the
RAYMOND F. KRAVIS CENTER FOR THE PERFORMING ARTS

701 Okeechobee Blvd
West Palm Beach, FL 33401
MAIN OFFICE 561.651.4200 (M-F 8:30A-5:00P)
MAIN FAX 561.833.3901
TECH FAX 561.833.5962
www.kravis.org

THEATER TECHNICAL STAFF

Director of Production	Chris Pennington	561.651.4296	pennington@kravis.org
Theatre Operations Supervisor	Diego Sacchi	561.651.4392	sacchi@kravis.org
Theatre Operations Supervisor	Ricardo Gonzalez	561.651.4302	gonzalez@kravis.org
Theatre Operations Coordinator	Diane Carlton	561.651.4317	carlton@kravis.org
Production Manager	Melinda Gallant	561.651.4245	gallant@kravis.org
Presenter Contact	Georgiana Young	561.651.4393	gyoung@kravis.org
Box Office contact	Maria Quesada	561.651.4240	quesada@kravis.org
Front of House contact	Paul Kaufman	561.651.4203	kaufman@kravis.org
Marketing contact	Phala Murray	561.651.4387	murray@kravis.org
Contracts Manager	Shirnette Ball	561.651.4221	ball@kravis.org

SEATING CONFIGURATIONS

Hall Maximum Seating Capacity - 291
Riser Seating.....247
Floor Seating.....44

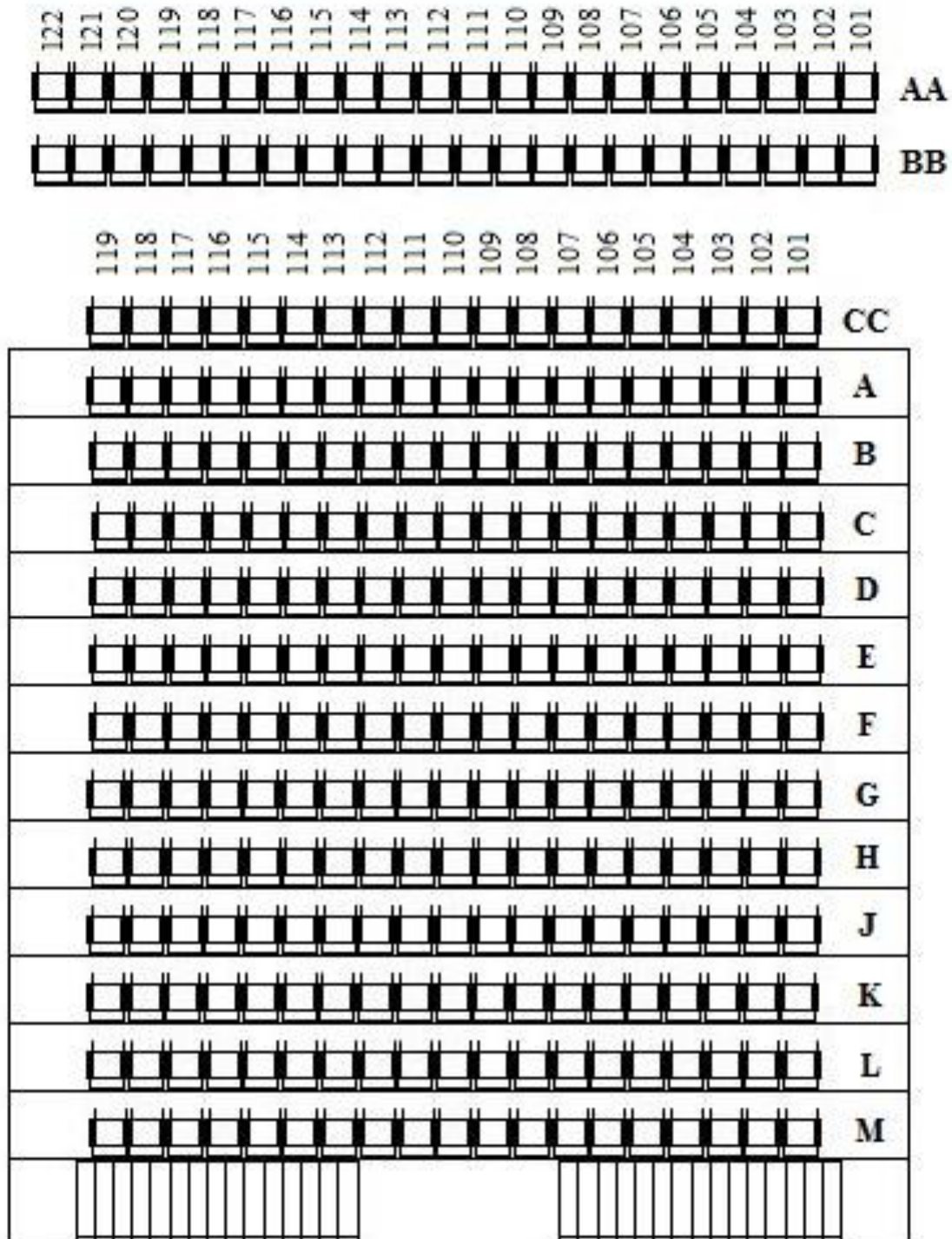
Note: Seating varies depending on stage set up. Contact KCPA Technical department for details.

SHOP

There is a wood shop with welding facilities for aluminum, metal & steel in the adjacent building. Air compressors are available.

PLAYHOUSE DIMENSIONS AND SPECIFICATION

The Hall is a Black box Theatre, located on the second floor of the Cohen Pavilion at the Kravis Center. There is no fixed seating. The Hall has a removable seating riser that holds 247 seats with additional room for floor seating depending on the size of your stage area. The room dimensions are 50' wide by 88' long and 33' high. The floor is stained black and constructed of 1-inch Maple tongue-and-groove on 3/4-inch plywood over two-by-fours with 1/2-inch neoprene pads.



PORTABLE SEATING RISER

The Hall is equipped with a StageRight removable seating riser, consisting of 12 rows of 19 interlocking chairs each. Two floor rows consist of 22 chairs each. There are handrails on all sides and two sets of escape stairs at the rear of the riser. Rope light and LED panels provide safety illumination.



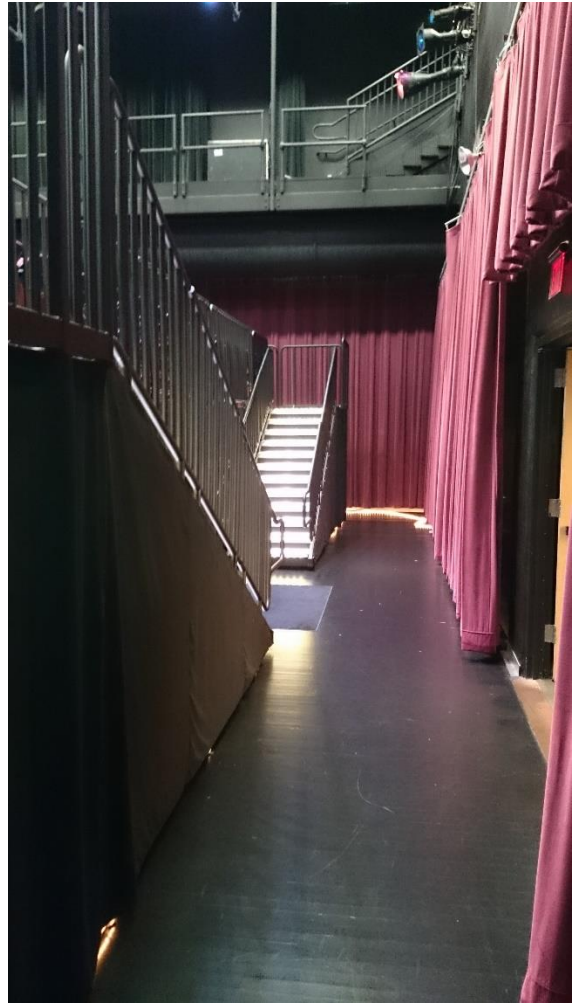
View from stage, seating in continental seating format under work light.



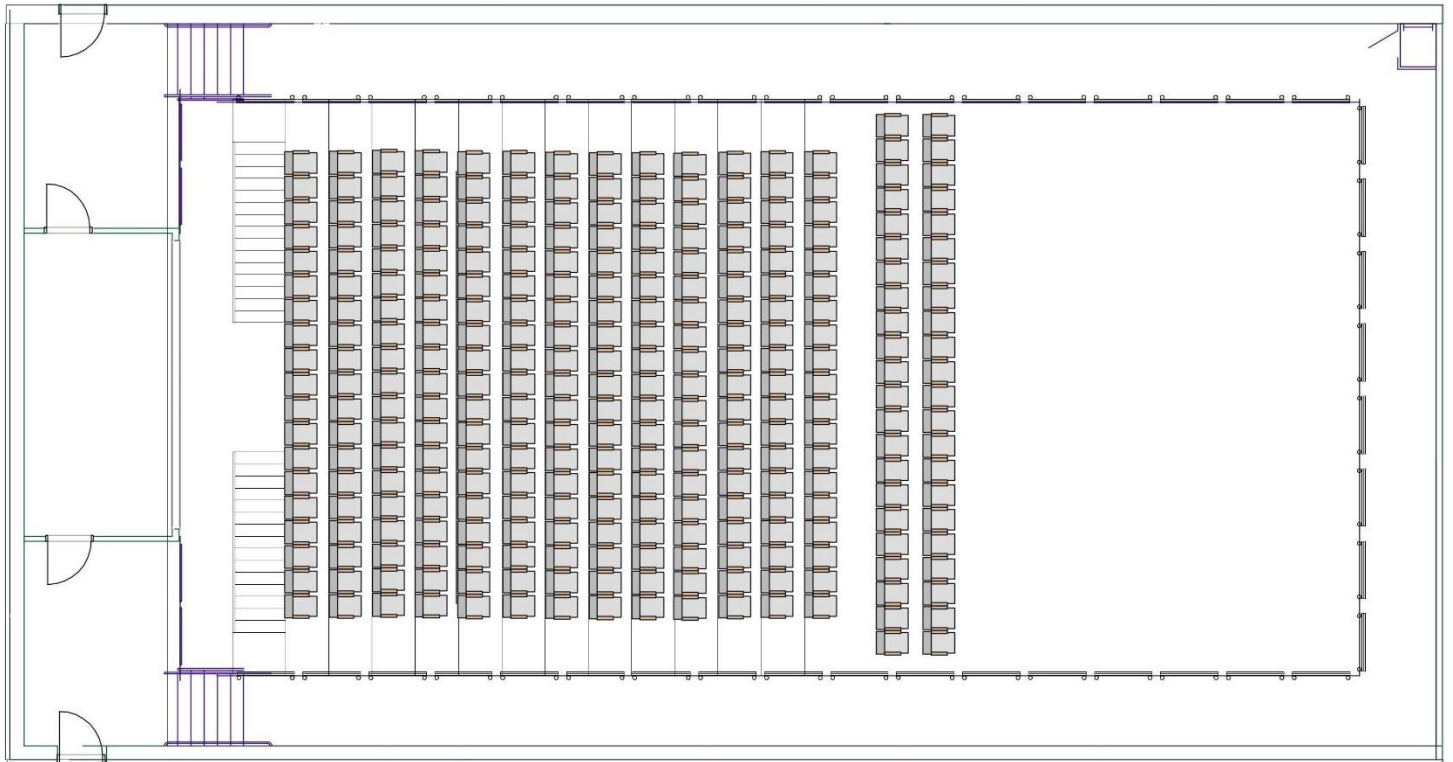
View from stage, seating in cabaret format with tables under house lighting. Sara included for scale.



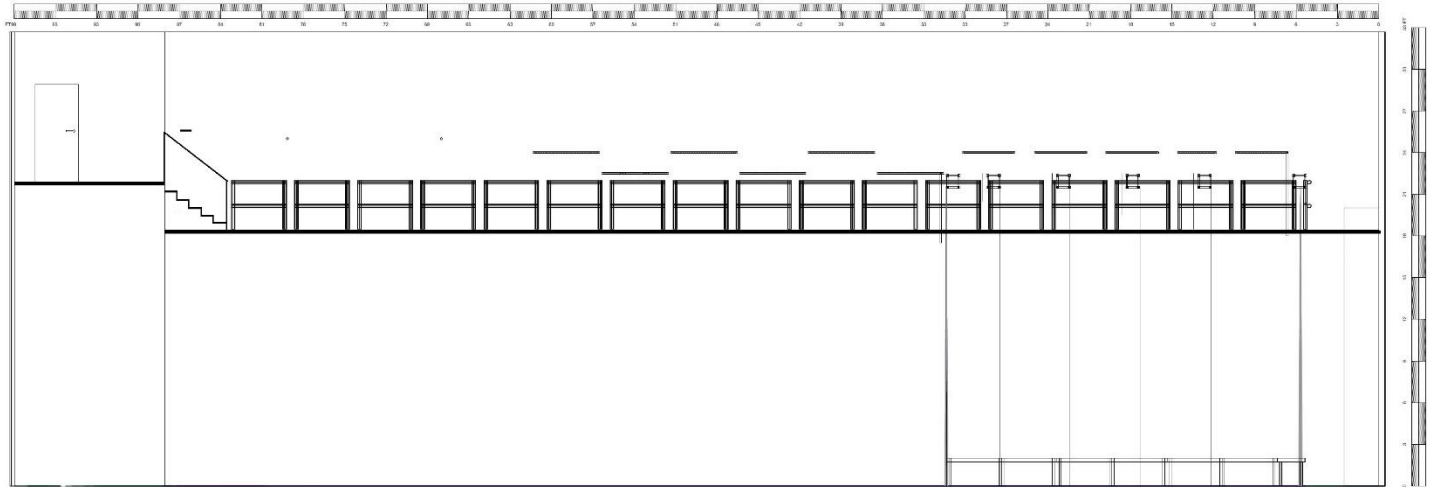
House Left audience walkway.



Main audience entrance and riser escape stairs.

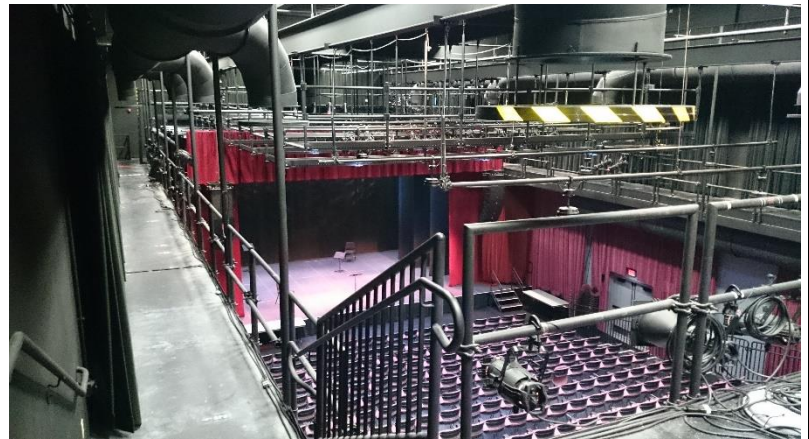


There is a catwalk 18.5' above the floor on three sides of the room with 2' and 4' high railings from which lighting instruments may be hung. There are (6) 36' long 1' x 1' trusses hung from 1/4 ton CM electric chain motors for soft goods and masking. There are 2 deadhung pipes for hanging additional lighting fixtures away from the grid.

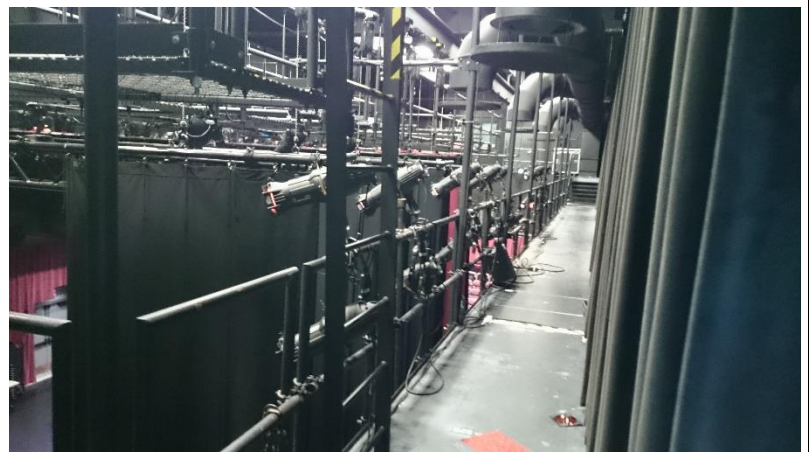


US crossover, catwalk level.

The control booth is located 84' from the back wall and is 40" higher than the catwalk. It is accessible from the 3rd floor of the Cohen Pavilion or by ladder chase in the USR corner of the stage. The booth contains the lighting control desk, the audio console and control racks. Short stairs on either side of the booth provide catwalk access.



HL outside booth, stairs to catwalk and hanging positions.



HR catwalk, ladder chase up to grid and hanging positions.



View from HL side of booth.



View from HL side of booth.



View of stage from control booth.

PORTABLE STAGE

The portable stage is a Wenger Custom Versalite Platform System.

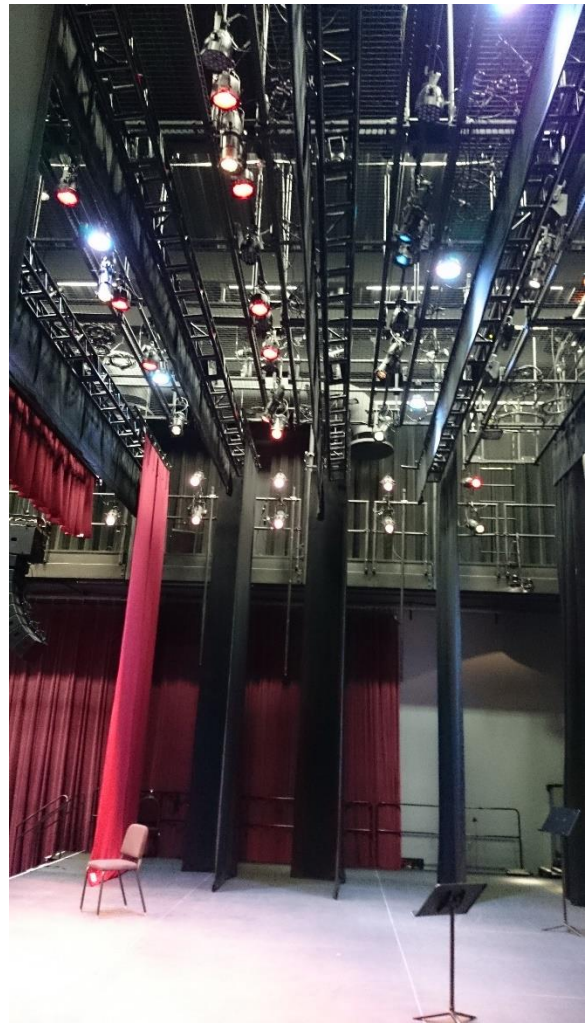
There are 36 - 4' by 8' platforms and 6 - 2' by 8' with 24" high legs.
These can be set in any configuration desired. 24'x 40', 24'x 24', 12'x 16' etc.
No screws or drilling of any kind is allowed into the portable deck. 30 pound steel stage weights and 10 - 25 pound sandbags are available to weight set pieces in place.
The standard stage setup is 48' wide x 26' deep at a height of 24" above the floor. There are 4 step units for backstage and audience access. 24" stage skirting is available in black.



View from house left, Hall floor with stage removed.



View from DSR with stage and soft goods.



View from mid SL with stage and soft goods.

SOFT GOODS INVENTORY

The standard configuration of the Hall is as a proscenium theatre with an opening 28' wide by 18' high. The false proscenium and masking goods are hung from trusses and includes the following soft goods:



1 - House Curtain (Burgundy) center split, attached to traveler. Only hung by request.

1 - Portal Valance (Burgundy)

2 - Portal Legs (Burgundy)

2 - Side Masking Tabs (Burgundy)

1 - Stage Skirt (Burgundy) 48' long x 40" high

1 - Stage Skirt (Black) 48' long x 40" high

8 - Black Legs (4 sets) 6' wide x 21'4" high

2 - Black Borders 40' wide x 6' high

2 - Black Borders: 40' wide x 4' high

1 - Full Stage Black Drop 40' wide x 21'4" high (center split)

1 - Black Scrim 40' wide x 21'4" high

1 - White Bounce Drop 40' wide x 21'4" high

Black leg extensions are available for presentations using the Hall floor with the stage removed.

View from DL corner showing soft good hanging positions. Stage in thrust configuration.

LIGHTING SYSTEM & POSITIONS

The Hall's lighting system is controlled by an ETC Ion XE with motorized fader wing. This venue uses a sACN network with Pathway Via switching and Pathway nodes. There are network and DMX ports distributed around the venue and can be configured as to DMX direction and universe.

There is a general house lighting plot (see following pages). Lighting fixtures may be hung on stage left or stage right catwalks, from the catwalk front of house, and lighting positions on the tension wire grid. Lighting may also be hung from the upstage catwalk, but this position is blocked by masking in the rep configuration of the room. Contact the KCPA Technical department for CAD drawings.

LIGHTING INSTRUMENT INVENTORY

- 6 - Source 4 10° 575w
- 25 - Source 4 36° 575w
- 36 - Source 4 26° 575w
- 6 - Source 4 19° 575w
- 11 - Source 4 Par MFL 575w
- 18 -Colorblast12 TRX
- 6 -Strand PLCyc
- 12 -Selecon 25-50 deg. Zoom 750w
- 21-LumenPulse RGBW

ADDITIONAL LENS TUBES INVENTORY

- 2 - Source 4 5°
- 2 - Source 4 10°
- 6 - Source 4 19°
- 29 - Source 4 26°
- 2 - Source 4 36°
- 3 - Source 4 50°
- 2 -Source 4 70°

SPOT LIGHT

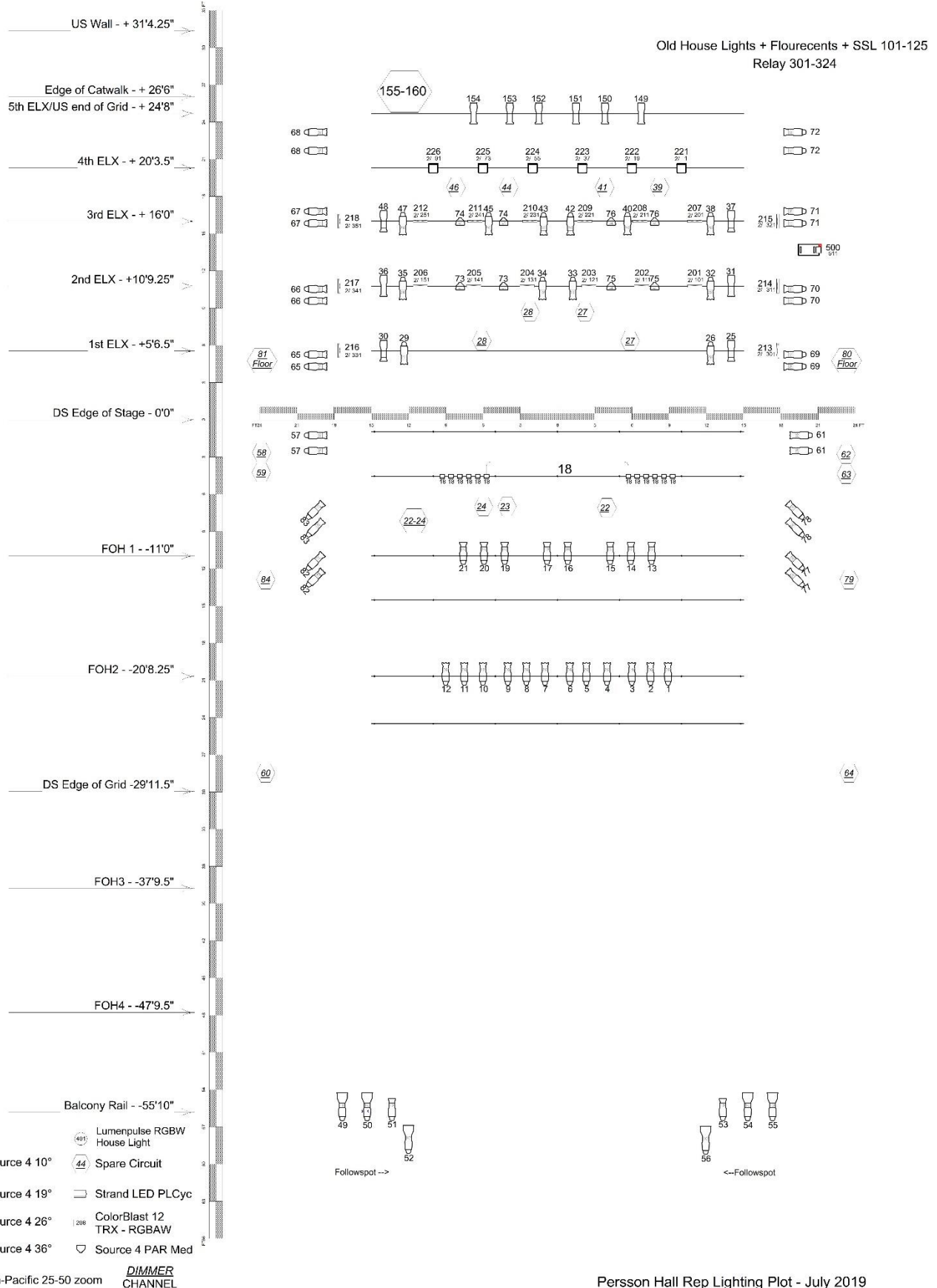
2 – ETC Source 4 ERS 10° 750w with iris, spot handle, spot yoke, and color boomerangs. Intensity can be operator or console controlled.

ADDITIONAL POWER

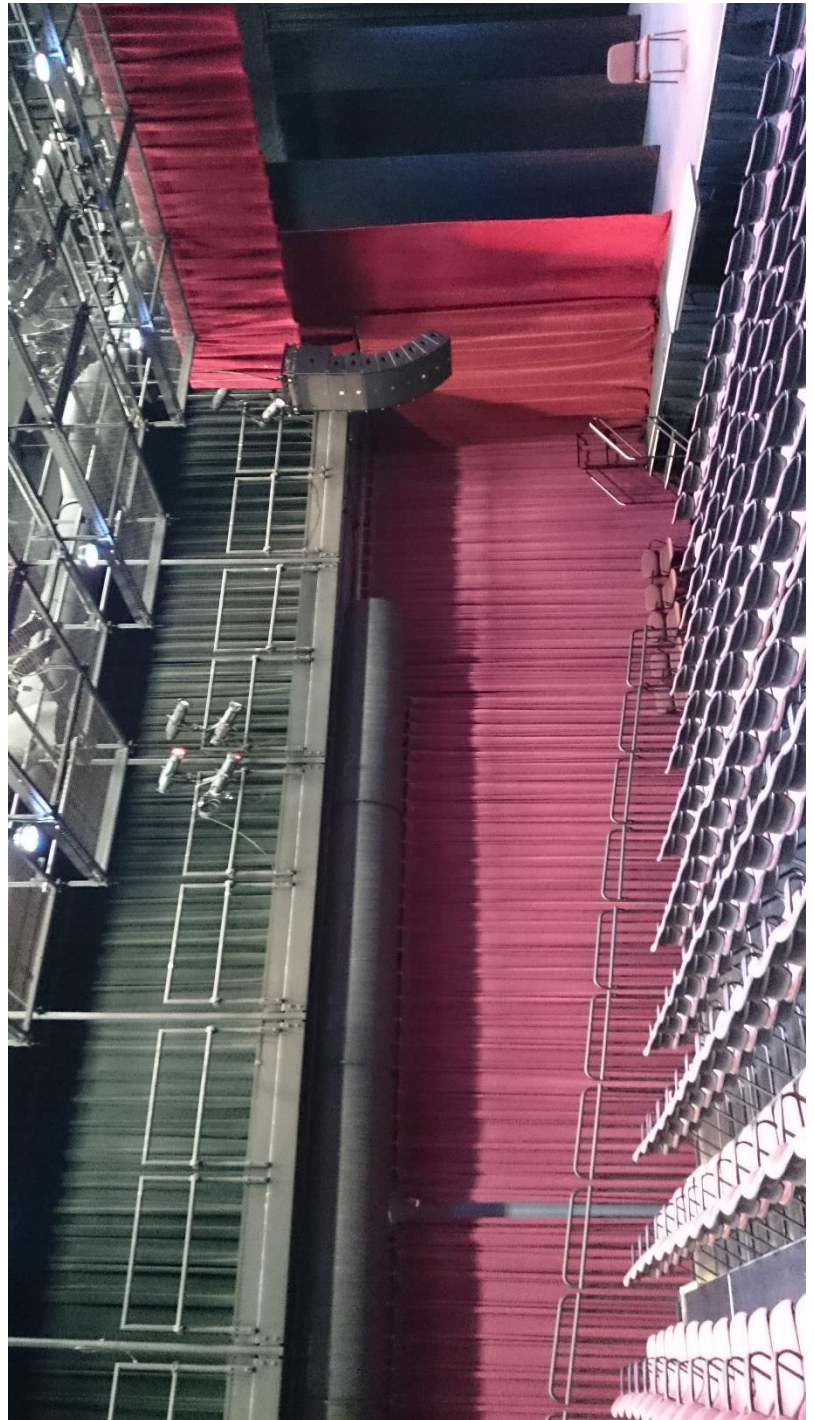
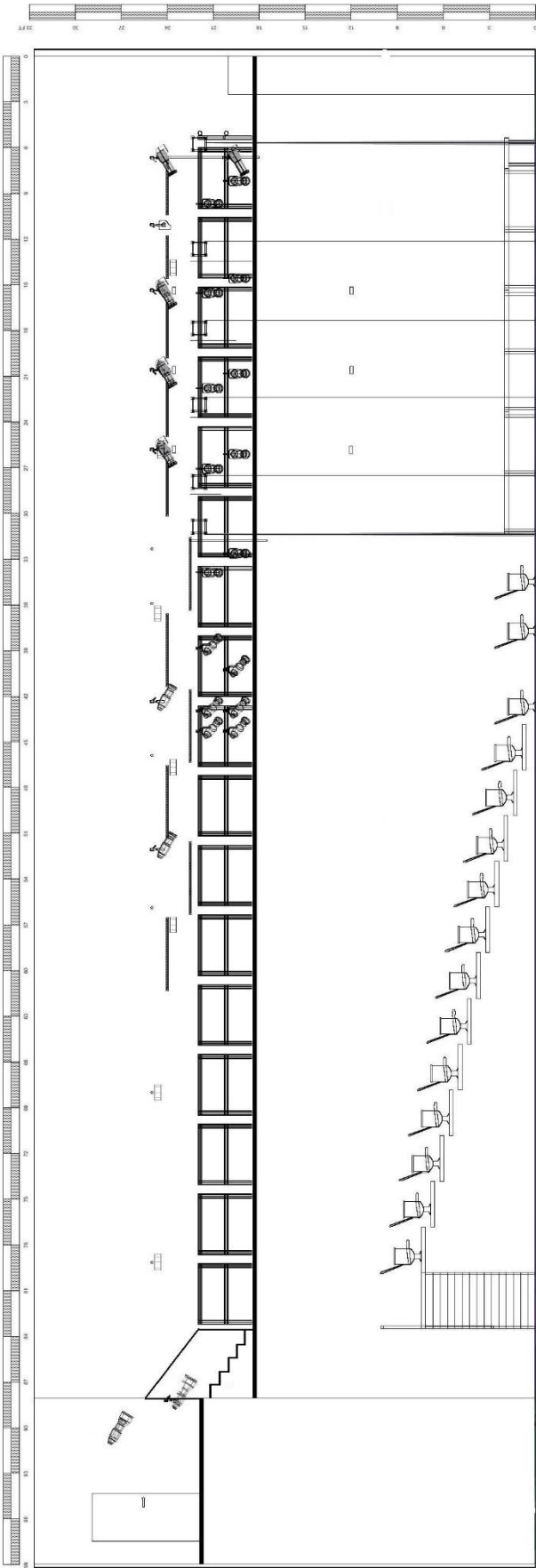
The Hall has a 3-phase, 100-amp, 120/208 panel located upstage right.

note: all inventory is subject to availability. Contact Kravis Technical Department for information.

REPERTORY LIGHTING PLOT



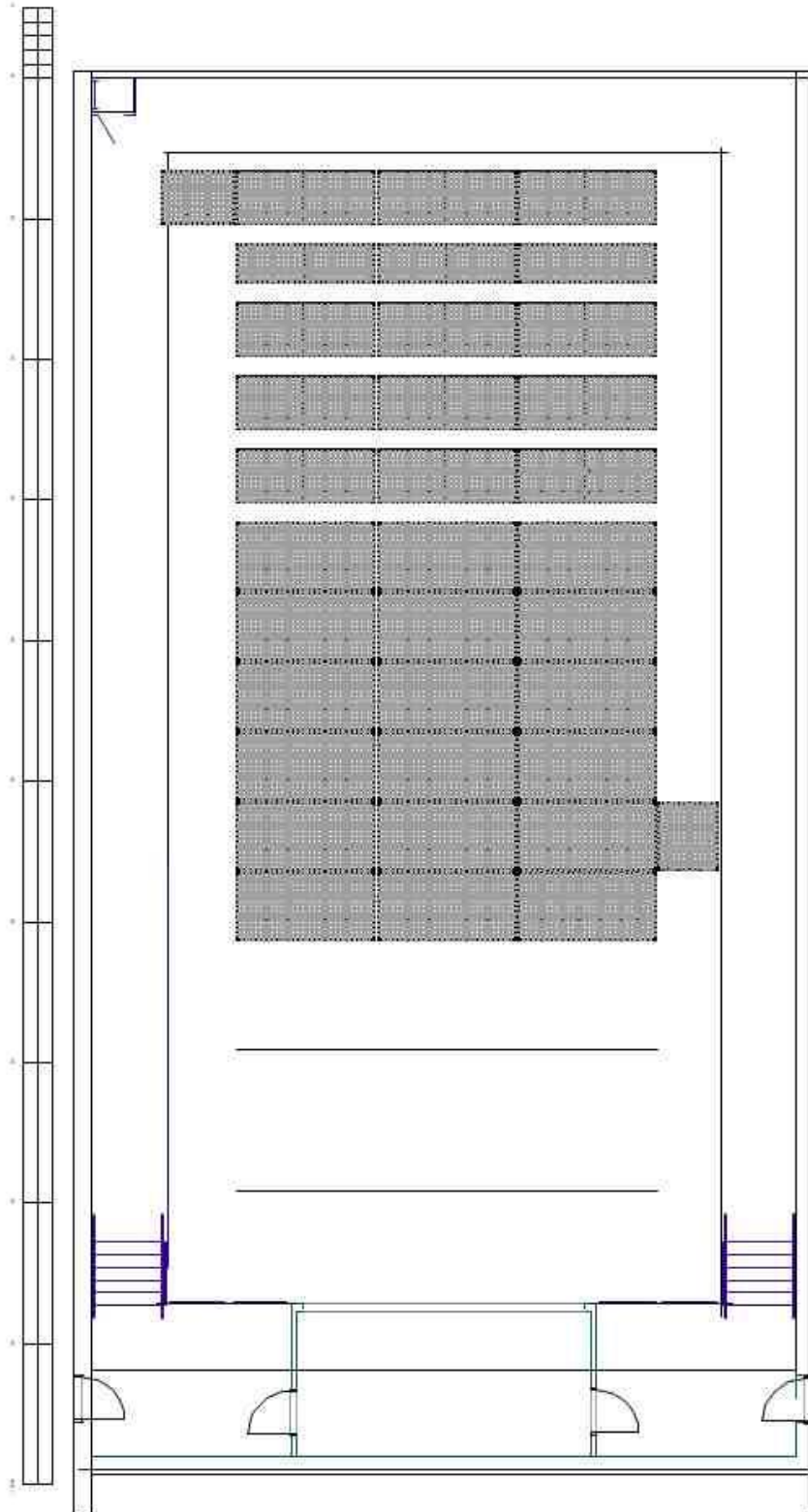
Persson Hall Rep Lighting Plot - July 2019



Section @ centerline, showing stage, catwalk, grid, and seating riser.

LIGHTING GRID SYSTEM

The playhouse is equipped with a tension wire grid with wells for focusing lighting instruments. The tension wire grid is a custom SkyDeck system. Schedule 40 pipe is attached at each well creating positions for lighting.





Lighting grid front of house from audience.



Lighting grid front of house.



Lighting grid over stage.



Lighting grid upstage overhead.

SOUND & COMMUNICATIONS SPECIFICATIONS

The Playhouse is equipped with a permanently installed sound system. The console is set up to be controlled from the control booth at the rear of the Hall. The PA is powered by PowerSoft amps.

CONSOLE

- 1 Avid Venue SC48 Remote with 48 Input Channels & 32 Sends. 48 Gates, Limiters & Effects software package

SPEAKERS

- 2 EAW EP1 Powered Subs on floor under stage
- 2 Aclon RS150A Powered Sub cabinets (1 per side)
- 16 Aclon RS6 full range cabinets (8 per side)

The left and right arrays consist of 1 Powered sub (top mounted) and 8 full range cabinets per side. The arrays are powered with Powersoft K2 amplifiers.

MONITORS

- 4 EAW SM-202H Monitors (SM-200 on request)
- 2 Flow side fills stage left and right
- 4 Monitor mixes are available from the FOH console

Backstage monitors are run thru the FOH console and have outputs to both dressing rooms and backstage hallway. The Stage monitor system is powered by Powersoft K2 amplifiers.

SOURCE GEAR

- 1 Tascam CD-RW 901L Pro
- 1 Mac Book Pro with Qlab

MICROPHONES & DIRECT BOXES

- | | | | |
|---|---|---|----------------------------------|
| 6 | Shure SM58 | 8 | Audio Technica Choir Mics (grid) |
| 4 | Shure SM57 | 2 | Radial USB Pro |
| 3 | Shure SM81` | 4 | Sennheiser e604 |
| 1 | Sennheiser e906 | 2 | Radial Pro D2 (passive/Stereo) |
| 2 | DPA 4060 Piano Mics | 1 | Radial Pro AV |
| 2 | Countryman Type 85, 1 Stereo passive | 2 | Radial J48 DI |
| 6 | Shure UR4-D wireless systems/Shure SM58 handhelds & 8 Point Source Over Ear Mics. | | |

Each handheld has a corresponding body pack which share a frequency and cannot be used at the same time. A complete list of microphones is available by request.

HEARING ASSISTANCE SYSTEM

- 20 Sennheiser RF units

COMMUNICATIONS

- 1 channel of Clear Com for communication between stage area and sound booth.
- 4 Clear Com wireless belt packs with single muff headsets.

Our full inventory serves multiple halls and availability for any given date is neither implied nor guaranteed.

LAUNDRY

The Laundry area is located on the same floor as the dressing rooms. There is (1) 20 lb. capacity two-speed washing machine, and (1) 20 lb. capacity dryer, (1) ironing boards and irons, and (1) Jiffy Steamer.

DRESSING ROOMS

There are 2 Dressing rooms that can accommodate 8 people each. Each climate controlled dressing room is equipped with hot and cold running water, 2 showers , 4 sinks, 2 toilets, lighted mirrors, and audio program monitors.



Women's Dressing Room, Rear



Women's Dressing Room, Front

ORCHESTRA EQUIPMENT SPECIFICATIONS

The Hall is equipped with acoustical curtains surrounding the room that may be opened or closed depending on the acoustics you are trying to achieve.

ORCHESTRA CHAIRS

- 100 - Orchestra Chairs
- 9 - Cello Chairs
- 110 - Music Stands
- 80 - Music Stand Lights
- 8 - Bar Stools
- 1 - Conductors Podium and Stand
- 9 - Choral Risers

PIANOS

- 1 - 9' Steinway Concert Grand Model C
- 1 - 6' Yamaha Concert Grand C3F
- 1 - Studio Yamaha upright piano

Note: Pianos may be tuned by house piano tuner only.

TRUCK, BUS AND CAR PARKING

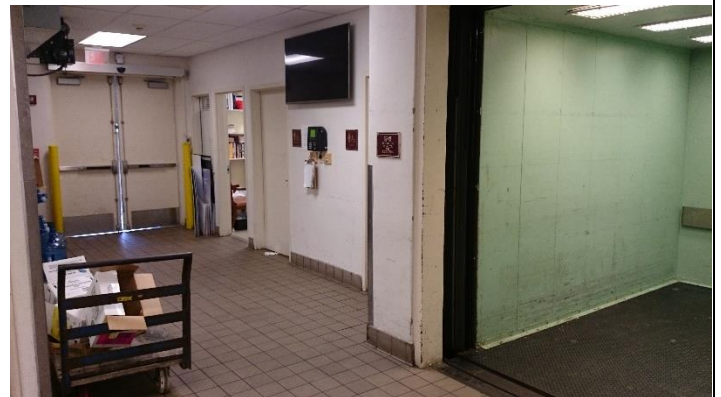
Long term truck and bus parking must be prearranged with KCPA Technical Director. Car parking is available in the garage at no charge. Garage maximum height is 6'10".

LOADING DOCK

The Loading Dock is located off of Tamarind Avenue on the west side of the building. There is one bay with a load leveler. The loading dock is 4' high with approximately 350 square feet of receiving area. The loading dock doors are 6' wide (5' 1" usable) X 8' high. The freight elevator is located just inside the loading dock doors on the left hand side. The freight elevator is 6' wide x 8' high x 10'-6" deep with a total load capacity of 6000 pounds. The freight elevator has landings on the Banquet level, Mezzanine level, Education level and the Administrative level.



Freight Elevator with dimensions.



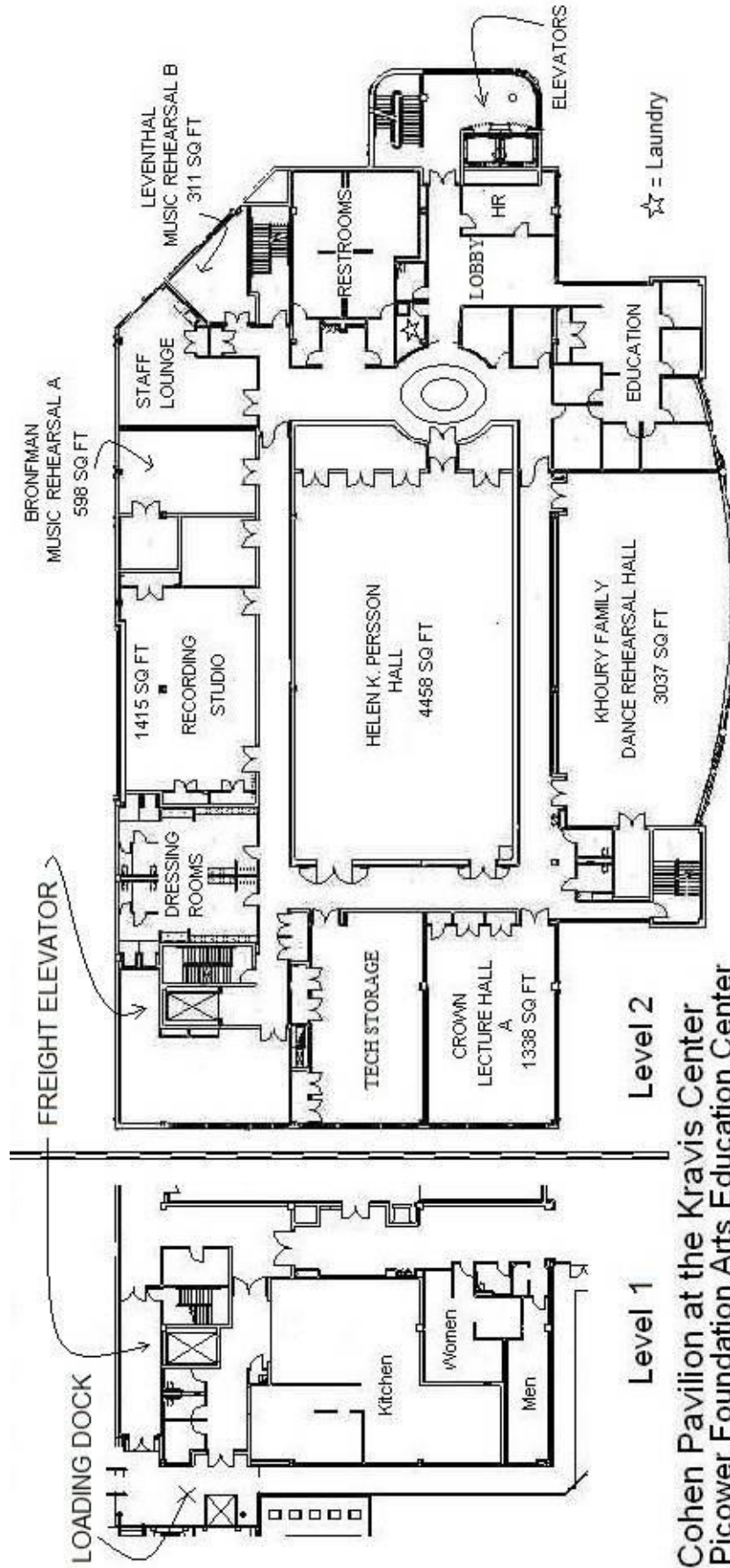
Corridor from loading dock to elevator.



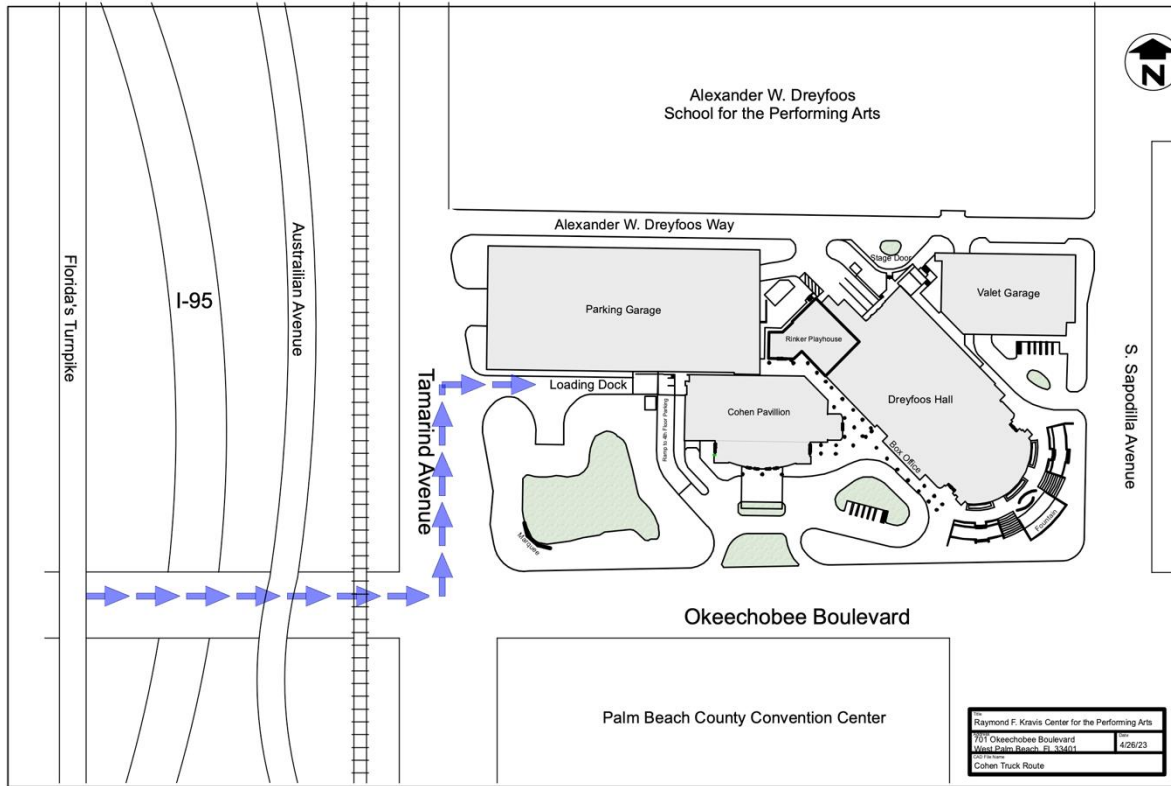
Cohen loading dock.



Cohen loading dock.



Cohen Pavilion at the Kravis Center
Picower Foundation Arts Education Center



View of truck ramp to Cohen loading dock. Turn BEFORE the parking garage.