

TECHNICAL SPECIFICATIONS

THE EUNICE AND JULIAN COHEN PAVILION



WEST PALM BEACH, FLORIDA
January 5, 2023

TABLE OF CONTENTS

General Building Information.....3

Building Map.....4

Gimelstob Ballroom.....5

Recording Studio.....14

Dance Studio.....15

Crown Lecture Hall A.....16

Lecture Hall “B”.....16

Bronfman Music Studio.....17

Leventhal Music Studio.....17

Surrounding Area.....18

**The Eunice and Julian Cohen Pavilion
At the
Raymond F. Kravis Center for the Performing Arts**

701 Okeechobee Blvd.
West Palm Beach, FL 33401
Main Office 561.833.8300 (M-F 8:30A-5:00)
Main Fax 561.833.3901
Tech Fax 561.833.5962

AUDIO VISUAL

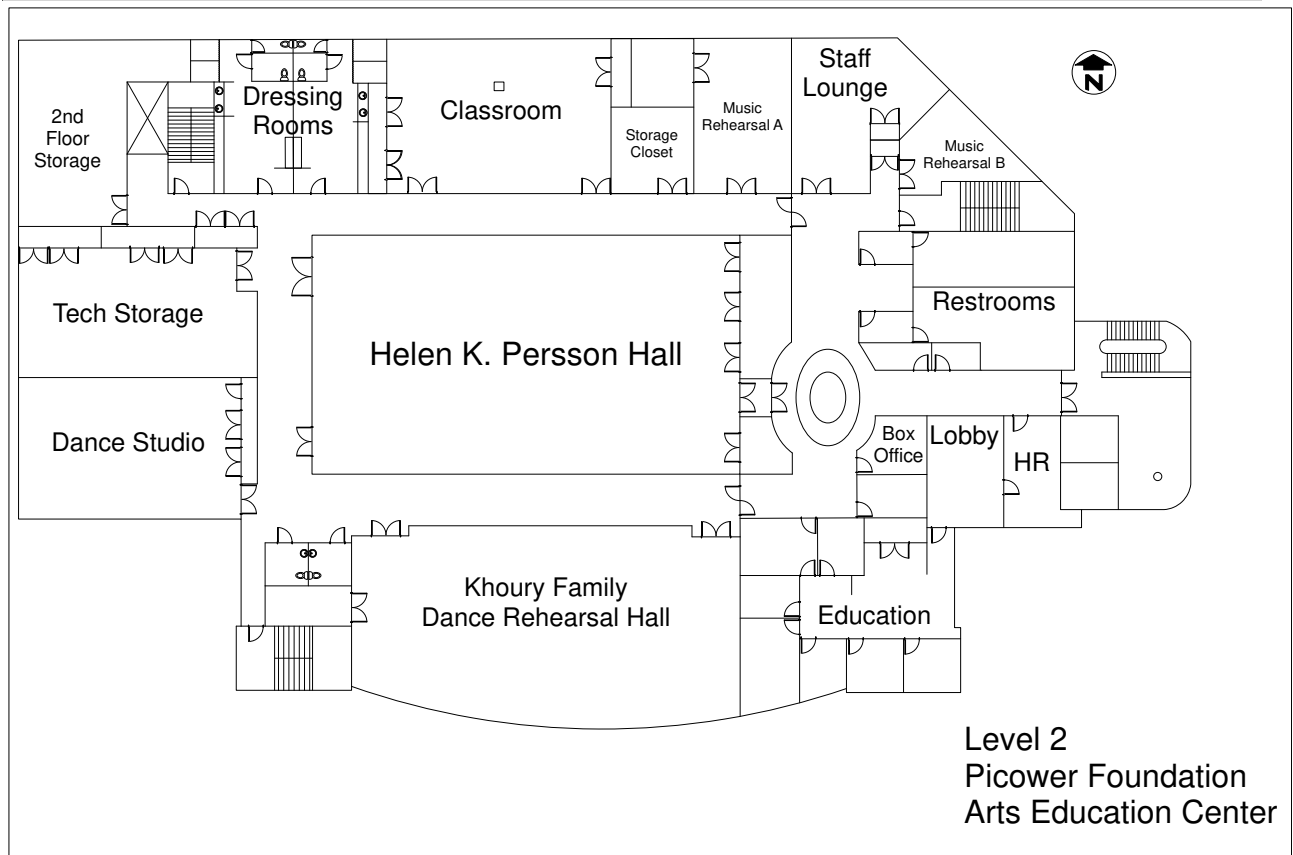
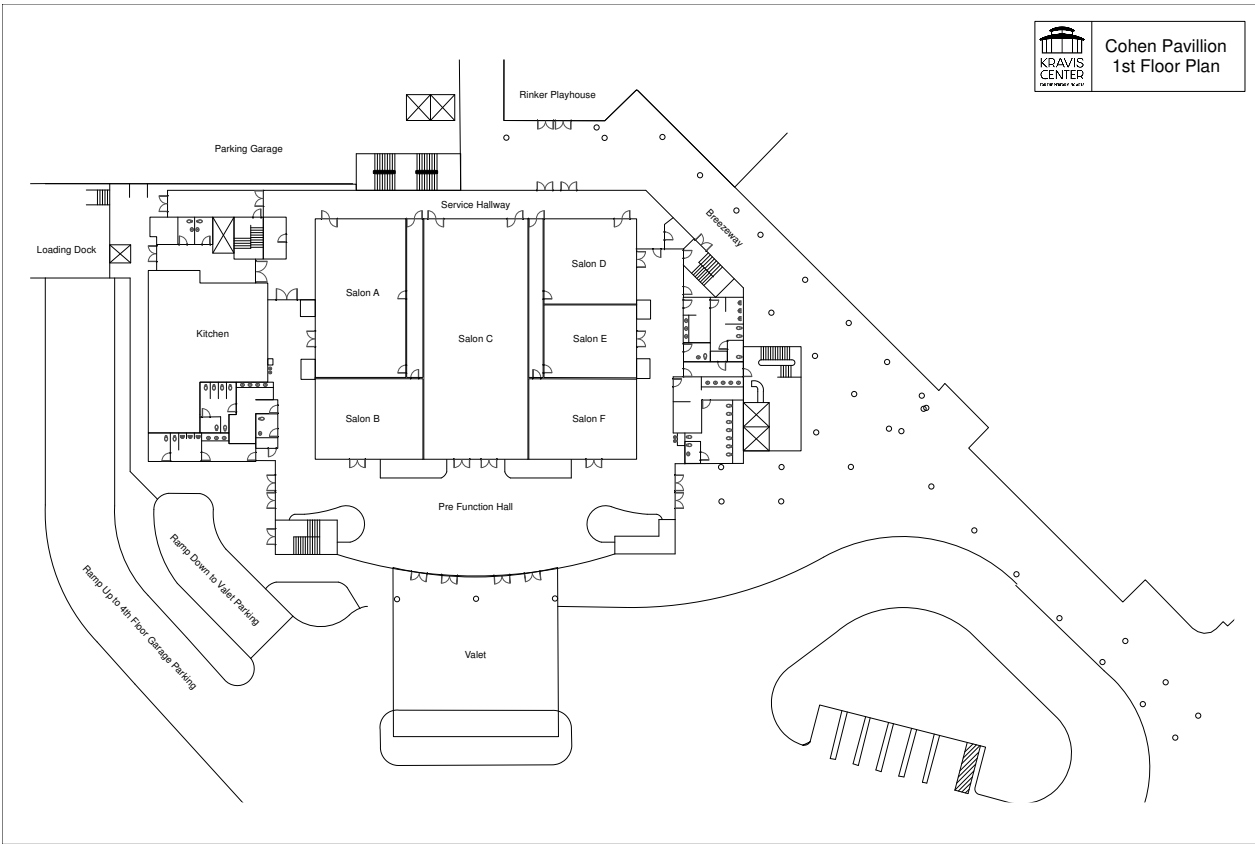
Audio Visual Production Manager	Matthew Wilt	561.651.4202	wilt@kravis.org
Director of Production	Chris Pennington	561.651.4296	pennington@kravis.org

Shop

There is a shop available in the adjacent building. The shop is a full wood shop with welding capabilities for aluminum and steel. Compressed air is available for pneumatic tools.

Room Capacities (approximate)

Room	Sq. FT	Theatre Style	Classroom Style
Conference Room	700	N/a	N/a
Rehearsal Hall	4456	400	180
Dance Studio	3037	300	100
Lecture B	1242	100	72
Lecture A	1338	110	75
Recording Studio	1415	120	90
Music Room A	598	45	40
Music Room B	311	12	12
Banquet Hall	10440	See plan	See plan



Herbert and Elaine Gimelstob Ballroom

Stage Specifications

The stage is a portable stage built in 4' X 8' sections. Combinations of up to 40' wide and 24' deep with a height of either 24" or 32". There is pleated black skirting for masking. The stage tops are smooth surface and flat black in color.

Dance floor

There is a portable dance floor available. The dance floor is built on 3' X 3' sections with a maximum size of 39' X 24'. The dance floor is Teak in color.

Room Dimensions

The ceiling height for the overall room is 18' 6". The cove ceiling is slightly higher at 21' 3".

Wall dimensions:

Full ballroom-	118' X 88'
Banquet "A"-	58' X 30' 8"
Banquet "B"-	28' 6" X 30' 8"
Banquet "C"-	86' 6" X 39' 9"
Banquet "D"-	30' 8" X 28' 7"
Banquet "E"-	30' 8" X 29'
Banquet "F"-	30' 8" X 28' 8"

Lighting

Wall sconces, chandeliers, work lights, two independent circuits of pin spots, and down lights are all controlled from touch pads located in the service hallway, control booth, and lobby; these can be controlled in unison or by zone.

The control booth is located on the Mezzanine level (accessible by stairwell and service elevator) and looks out onto Banquet "C".

Circuits 1-72 are located in a ceiling cove over Banquet "C", and break out into female stage pin receptacles.

Circuits 73-96 are located around the periphery of the Banquet Hall.

There is a large patch panel in the service hallway outside of Banquet "C" that contains 16 male socapex receptacles, inputs for both DMX universes (5 pin dmx), input for ETC link and a remote focus unit, and a 5 pin DMX data out port that receives from the control booth.

Console ETC Ion XE

Pin Spots Full ballroom (no air walls installed) 88 pin spots
Banquet A, B, D, E and F have 12 pin spots per room
Banquet C has 38 pin spots
All locations of pin spots can be assigned to A or B circuits, or off.

Power Distribution

Panel	Phase	Amps	Volts	Common Use	Location
A	*3	200	120/208	Shore Power	Loading Dock
B	3	200	120/208	Theater Equipment	USR Service Hallway
C	3	200	120/208	Lighting	USC Service Hallway
D	*3	200	120/208	Sound Equipment	USC Service Hallway
E	3	200	120/208	Theater Equipment	USL Service Hallway

*= Isolated Ground

Circuit Location Information

Circuit #'s	2K stage pin	Socopex	Location
1-6	Yes	Yes	Ceiling USL
7-12	Yes	Yes	Ceiling USL
13-18	Yes	Yes	Ceiling USR
19-24	Yes	Yes	Ceiling USR
25-30	Yes	Yes	Ceiling MSL
31-36	Yes	Yes	Ceiling MSL
37-42	Yes	Yes	Ceiling MSR
43-48	Yes	Yes	Ceiling MSR
49-54	Yes	Yes	Ceiling DSL
55-60	Yes	Yes	Ceiling DSL
61-66	Yes	Yes	Ceiling DSR
67-72	Yes	Yes	Ceiling DSR
73-74	Yes	No	Banquet A West Wall
75-76	Yes	No	Banquet A North Wall
77-78	Yes	No	Banquet C North Wall
79-80	Yes	No	Banquet D North Wall
81-82	Yes	No	Banquet F East Wall
83-84	Yes	No	Banquet E East Wall
85-86	Yes	No	Banquet D East Wall
87-88	Yes	No	Banquet F South Wall
89-90	Yes	No	Banquet C South Wall
91-92	Yes	No	Banquet B South Wall
93-94	Yes	No	Banquet B West Wall
95-96	Yes	No	Banquet A West Wall

Rigging

There are 176 points rated at 150 pounds evenly spaced around the Ballroom. These are static points only.

There are 12 points rated at 2000 pounds located in the south end of Salon C.

There are 54 points rated at 500 pounds evenly spaced around the Ballroom.

Sound and Communications

Main Console:

- (2) Midas Pro2

Outboard Gear

- (2) Decimators Video Converters

Microphones

- (3) Shure SM58
- (2) DPA SC-4098

Wireless Microphones

- (8) Shure ULXD UHF Receivers
- (8) SM58 Handheld Transmitters
- (8) Body pack Transmitters w/ DPA Lavalier Microphones

Direct Boxes

- (3) Radial USB DI's for laptop inputs

Speaker Configuration

Ballroom Audio – Line Array System

- (8) - EV X2A / X Line advanced Bi-Amped speaker enclosures
- (2) - EV X12-128 Dual 18 Subs Low end speaker Enclosures
- (2) - X12GRID Flying Assembly for Mid/Hi Enclosed
- (5) - EV TG7 Tour Grade Power Amps with RMC28 Digital Cards with Data Upgrade
- *For system management processing
- (1) - Dynacord MXE5 System Matrix & Processor for add'l processing and detailed tuning

* System can be Expanded from two clusters to four clusters when in the round or surround type of system coverage is required *

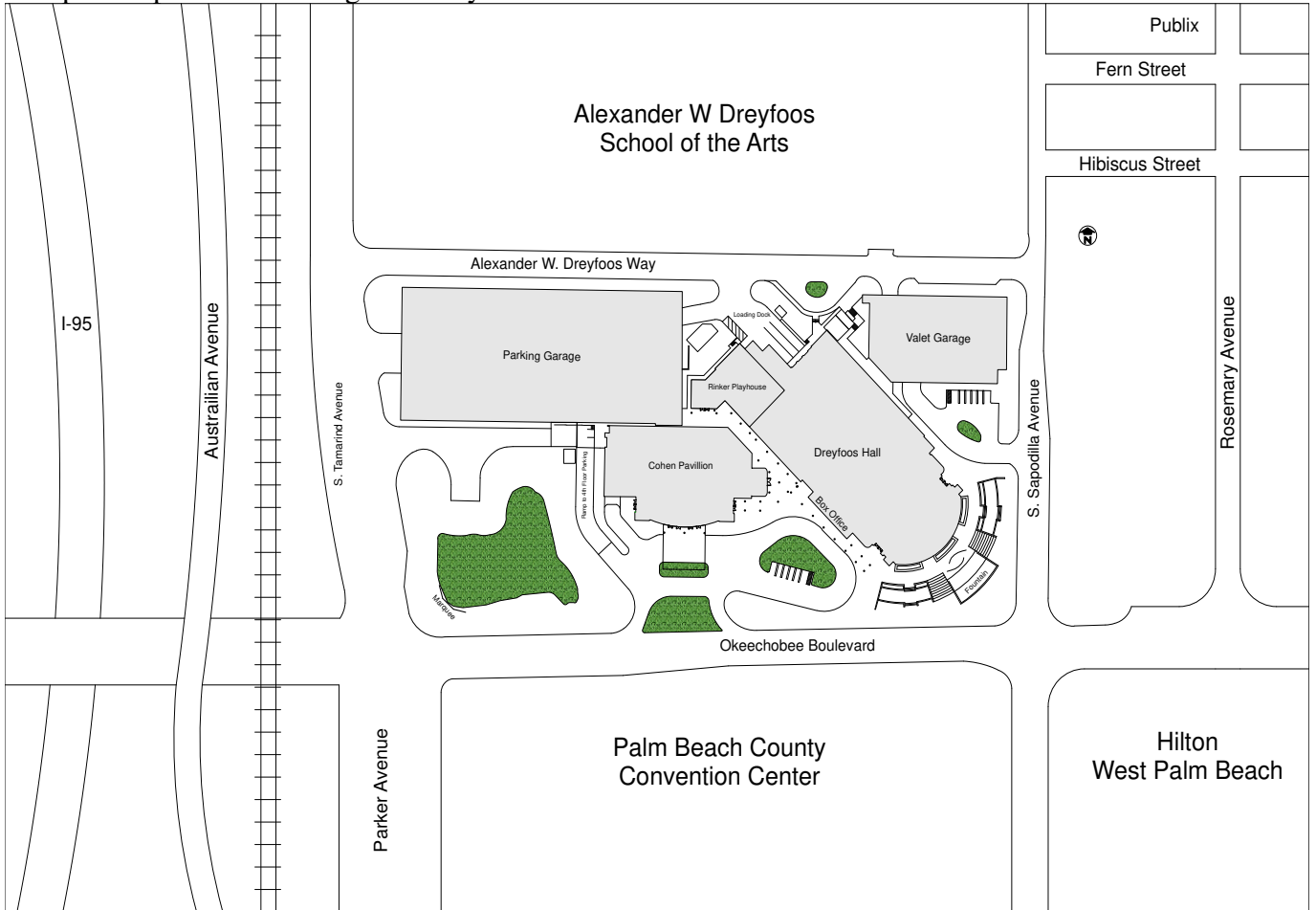
House Music System

Ceiling speakers are recessed into the ceiling and are separable by salon.

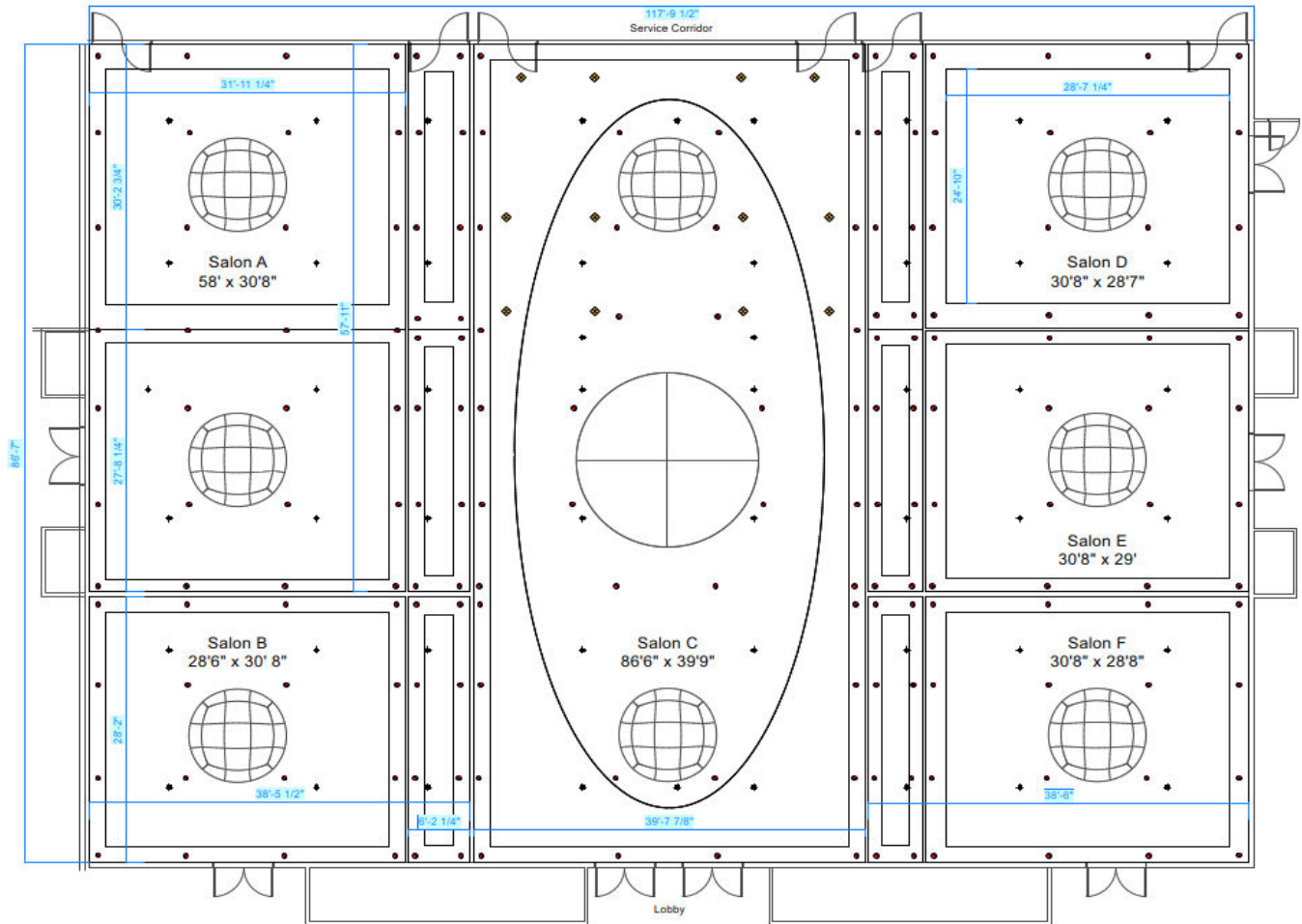
2 independent channels of streaming audio, selectable by genre.

note: all inventory is subject to availability and rental fees.
Contact Kravis Audio Visual Department for information.

Campus Map & Surrounding Area Layout



Ballroom Rigging Points & Room Dimensions



Orchestra Equipment

- (10) Wenger Signature 3 step choral risers
- (90) Black Wenger "Musician" Chairs
- (10) Black Wenger "Cello" Chairs
- (100) Music Stands
- (1) Conductor's Podium with Stand and Chair
- (8) 36" stools

Center Wide Equipment

Portable Stage

The portable stage is a Wenger Custom Versalite Platform System.

The standard stage setup is 24' wide by 24' deep. There are four sets of step units (2 at 24" two step and 2 at 32" three step) and stage skirting available in black.

There are (30) 4' x 8' platforms and (4) 4' x 4' platforms, with 8", 16", 24" or 32" high legs.

These can be set in any configuration desired.

- (1) Plexiglas Podium -

- (2) Anchor Public Address Podiums

Projection Equipment

- (4) Digital Projection DLP HIGHlite Laser II (14K)
- (4) Christie LW720 (7K)

Projection Lensing

- (4) 2.9 - 4.34 (used in RINKER – PERSSON – BALLROOM)
- (3) .77 (fixed – short throw)
- (2) 1.74 - 2.17 (long throw)
- (1) 4.34 - 6.76 (used in DREYFOOS)

Projection Screens

- (4) 10’x18’ Kits (Dress/Legs/Frame/Surface) (rear and front)
- (4) 16’x9’ Kits (Dress/Legs/Frame/Surface) (rear and front)
- (2) 7’x12’ Kits (Dress/Legs&Frame w/ Surface) (rear and front)
- (2) 6.5’ x 10’ Kits (Dress/Legs&Screen w/ Surface) (front)

Display Equipment

- (6) Flip Chart Easels
- (6) Display Easels

Video Equipment

Video Switchers:

- (1) Analog Way Ascender Video Switcher
- (1) Analog Way Saphyr Video Switcher
- (1) RolandV60 Video Switcher

Confidence Monitors / Television Displays

- (4) Q60A Samsung 65” Television
- (2) LC-50LB261U Sharp 50” Television
- (2) DSM (in rolling case second floor lockup - NEED MODEL #/SIZE
- (1) (Christie) 90” Television
- (4) Panasonic TH-65PF20U 65" Plasma Television

BALLROOM AUDIO SYSTEM:

Source and Input Gear

- (1) Marantz PMD321 CD player
- (1) Yamaha KX-W582 Dual Cassette deck
- (2) Panasonic RX-D20 Boom Box
- (4) Mackie 12 channel mixer

Monitors and Speakers

- (4) EAW SM200iH wedge
- (2) Anchor Liberty powered speaker
- (2) Mackie ART300A powered speaker
- (4) EAW EP2 powered speaker cabinet
- (4) EAW EP1 powered subwoofer cabinet
- (4) EAW KF300iR speaker cabinet

Microphones

- (2) Shure SM87A
- (3) Shure SM57
- (3) Shure SM58

note: all inventory is subject to availability. Contact Kravis Technical Department for information.

There are 2 portable racks that can be used throughout the Cohen Pavilion. They include

Audio Equipment Rack 1

- (1) Mackie 1402-VLZ 14 ch mixer
- (1) Alesis MicroVerb4 2ch parallel processor
- (1) Sony CDP-D11 CD player
- (1) Tascam CDA500 CD/Cassette player
- (1) Furman Q-602 30 band graphic EQ

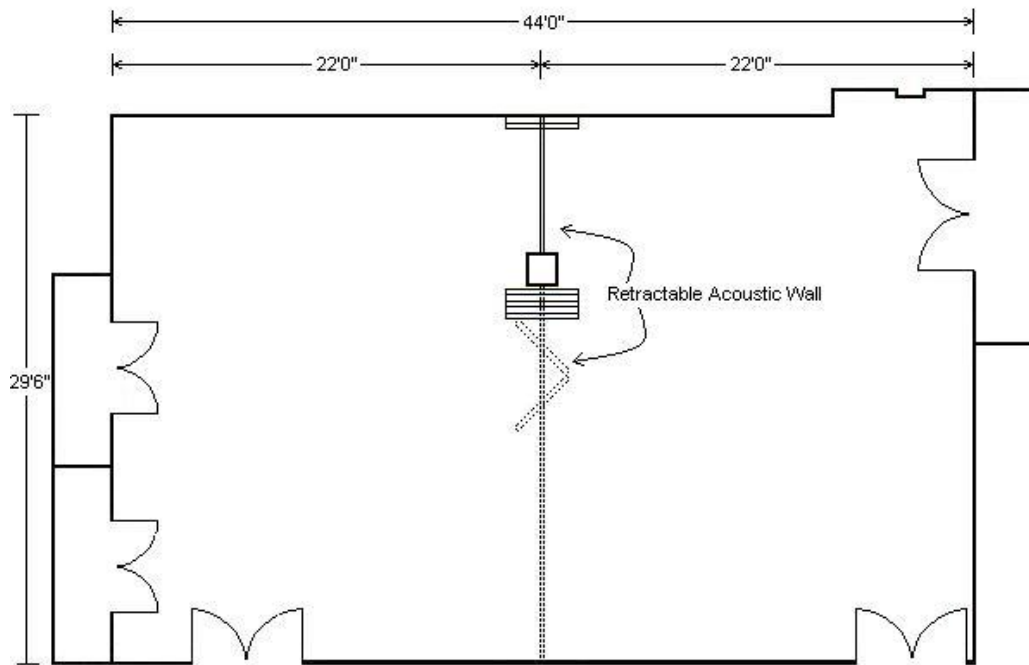
Audio Equipment Rack 2

- (1) Mackie CR-1604-VLZ 16 ch mixer
- (1) Tascam CD-A500 CD/Cassette player
- (1) Behringer DSP-800 24 bit digital EQ

note: all inventory is subject to availability. Contact Kravis Technical Department for information.

Recording Studio

The Recording Studio has a breakout panel with 2 mic, 2 line, 2 channel clear com, 2 loudspeaker (Neutrix), and CCTV connections against the east and west walls. There is a 200amp 3 phase company switch located in the northwest corner of the room.

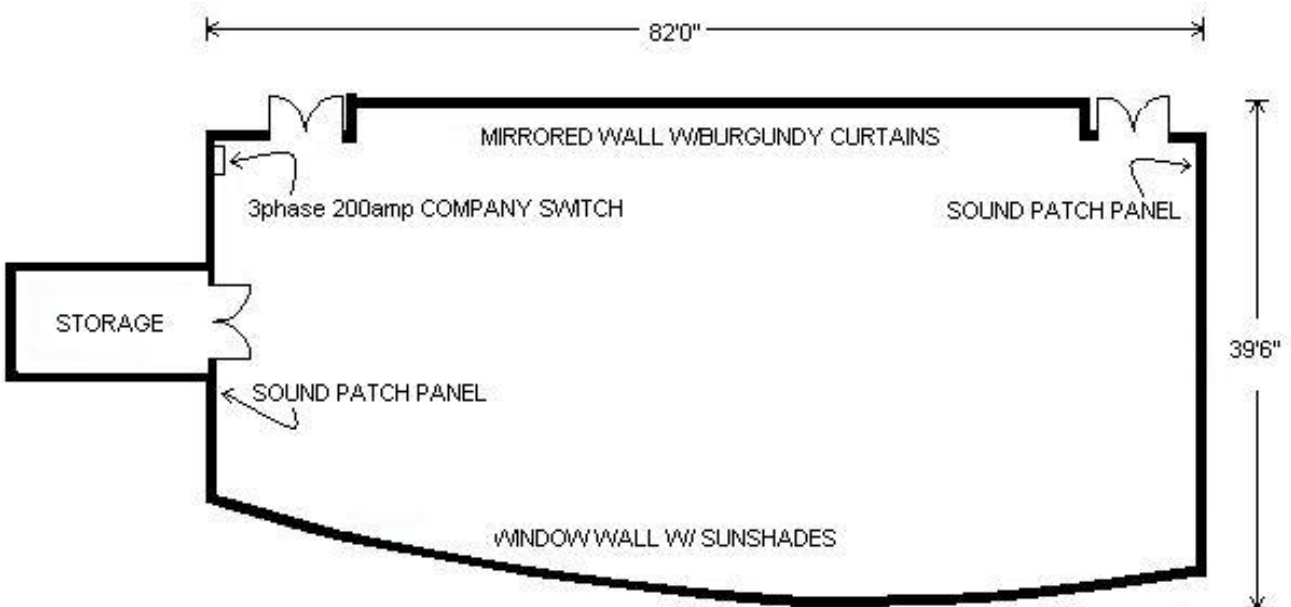


Dance Rehearsal Hall

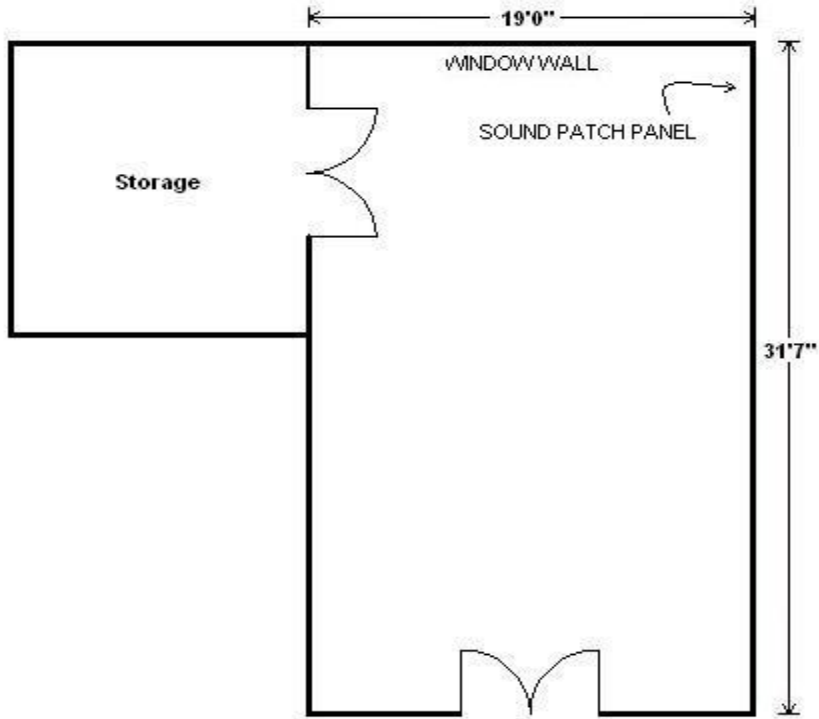
The Dance Studio has a 200 amp 3 phase panel located against the west wall, and a breakout panel with 2 mic, 2 line, 2 channel clear com, 2 loudspeaker (Neutrix), and CCTV connections against both east and west walls. The north wall is covered in floor to ceiling mirrors from door to door. Permanent barres are installed along the east wall. A 40' wide marley floor is available.

Equipment

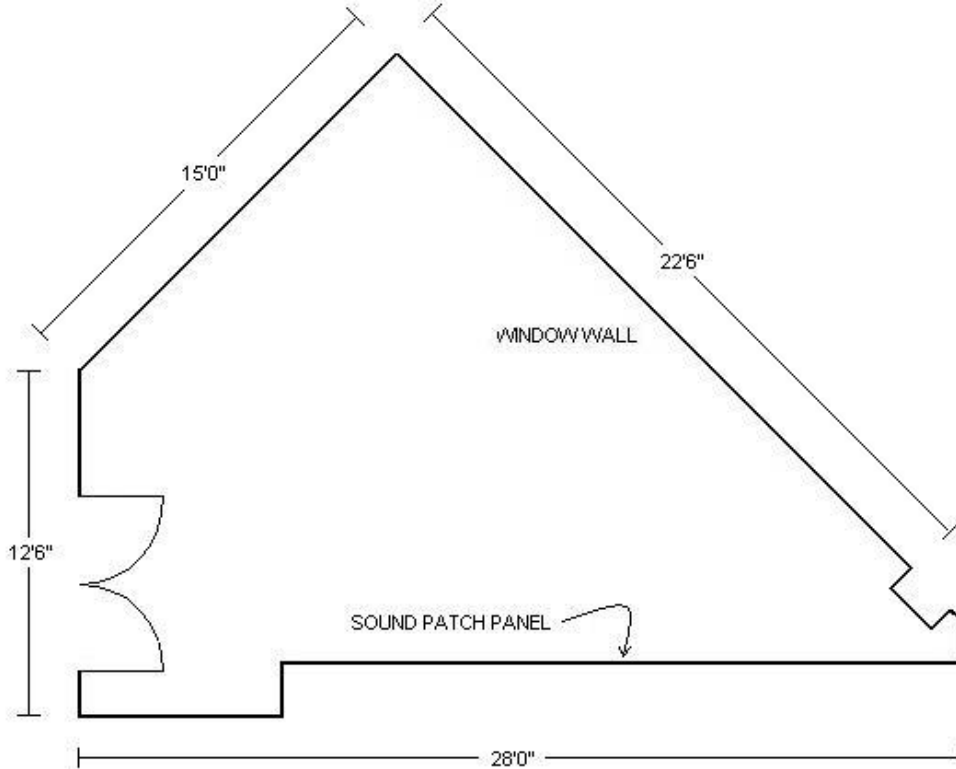
- (1) Yamaha baby grand piano
- (8) mobile ballet barres, 36"- 48" adjustable height
- (1) Tascam MD-350 Mini Disc player
- (1) Superscope PAC750 Cassette/CDRW deck
- (1) Crest 2 channel amp
- (4) EAW UB72 powered speakers
- (1) Shure ULF wireless lavalier microphone



Andrea and Charles Bronfman Music Rehearsal Studio



Muriel and Norman B Leventhal Music Rehearsal Studio



PIANOS

- 1 - 9' Steinway Concert Grand Model C
- 1 - 6' Yamaha Concert Grand C3F
- 1 - Studio Yamaha upright piano

Note: Pianos may be tuned by house piano tuner only.

TRUCK, BUS AND CAR PARKING

Long term truck and bus parking must be prearranged with KCPA Technical Director. Car parking is available in the garage at no charge. Garage maximum height is 6'10".

LOADING DOCK

The Loading Dock is located off of Tamarind Avenue on the west side of the building. There is one bay with a load leveler. The loading dock is 4' high with approximately 350 square feet of receiving area. The loading dock doors are 6' wide (5' 1" usable) X 8' high. The freight elevator is located just inside the loading dock doors on the left hand side. The freight elevator is 6' wide x 8' high x 10'-6" deep with a total load capacity of 6000 pounds. The freight elevator has landings on the Banquet level, Mezzanine level, Education level and the Administrative level.



Freight Elevator with dimensions.



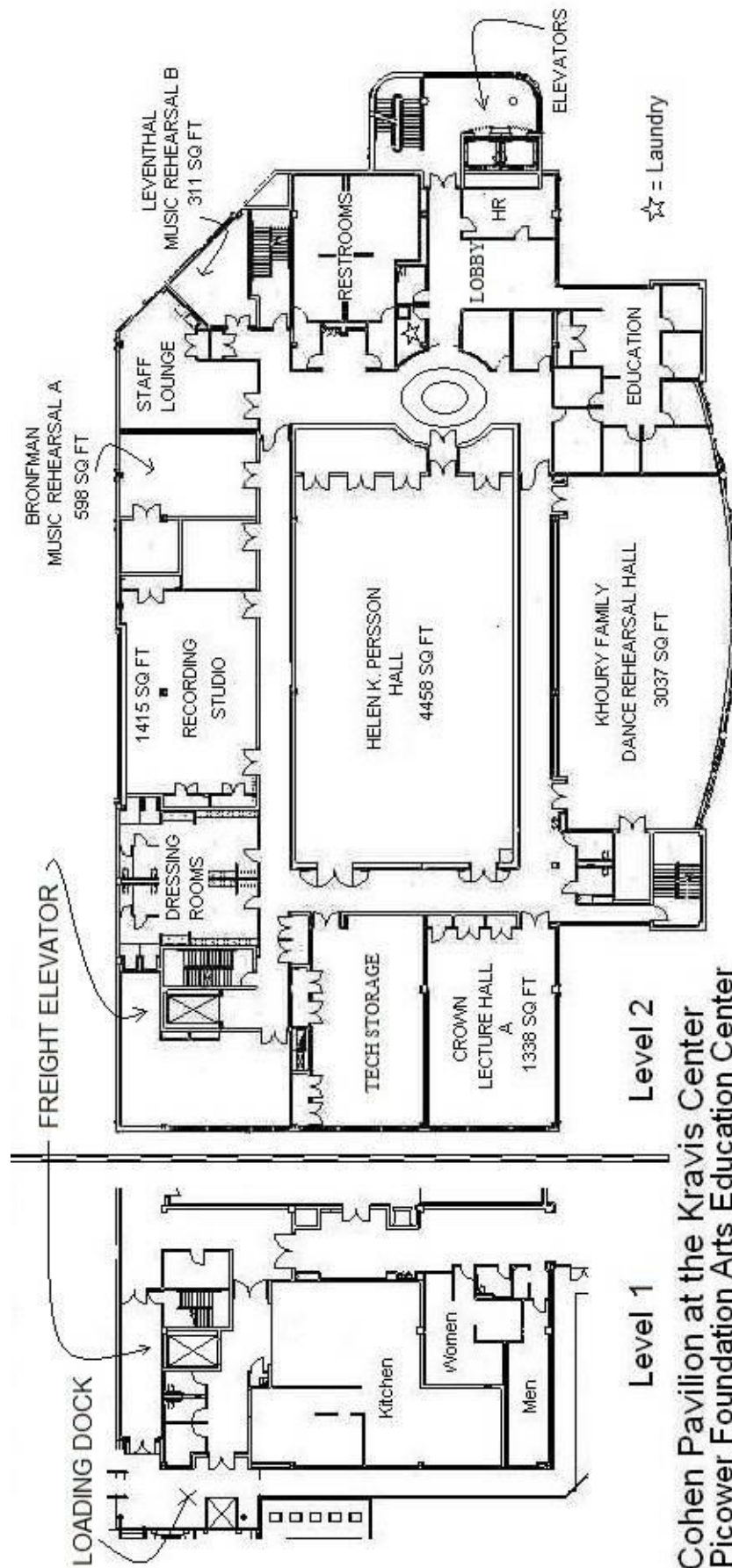
Corridor from loading dock to elevator.



Cohen loading dock.



Cohen loading dock.



Cohen Pavilion at the Kravis Center
Picower Foundation Arts Education Center



View of truck ramp to Cohen loading dock. Turn BEFORE the parking garage.

